

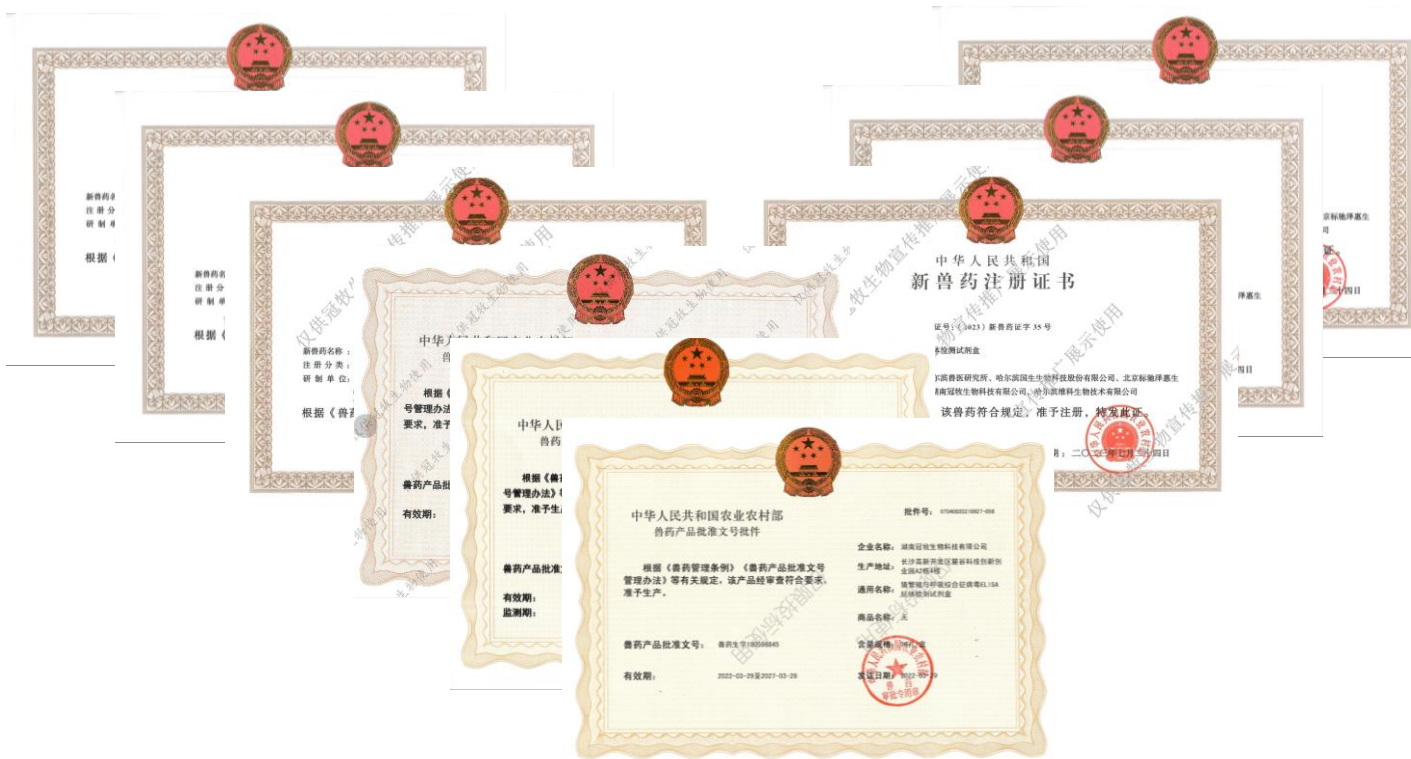


GUANMU ACCURATE DIAGNOSIS

【EasyTest 2.0】

Product Profile

Company qualifications



- National High-Tech Enterprise National Tech-based MSME (Micro, Small and Medium-sized Enterprise)
- Hunan Provincial "Specialized, Refined, Differential and Innovative" (SRDI) Enterprise
- Changsha Intelligent Manufacturing Pilot Enterprise
- Hunan Provincial Novel R&D Institution
- Hunan Famous Trademark Brand
- 24 Intellectual Property Rights (9 Trademarks, 11 Patents, 4 Software Copyrights)
- 2 Medical Device Registration Certificates, 2 New Veterinary Drug Certificates, 6 Veterinary Drug Production Approval Numbers.
- Lead/Participate in 3 National Standards, 4 Industry/Group Standards, and 1 Scientific & Technological Achievement Registration.....

- The only manufacturer in the livestock industry to **integrate Internal Controls (IC)** across all product lines to eliminate false negative risks.
- All products utilize a standardized PCR program, significantly reducing operational complexity for users.

★曾用诊断制品GMP车间生产 ★批准文号:兽药生字180598956

易检灵

便捷PCR系统

易检灵便捷PCR 现场检测更轻松



136-5740-7417

易检灵 | 便捷PCR系统



易检灵产品特点

- 采用全标准的荧光定量PCR方法, 结果更可靠
- 1小时内出结果, 检测时间比常规荧光定量PCR方法提速100%
- 全程内标监控, 避免假阴性
- 人工智能辅助结果分析, 随时随地的兽医检测专家
- 一把移液器、二种试剂组分, 三重保障(内标、阴性对照、AI智能), 四个步骤, 任何人轻松搞定
- 便携式设计的检测套装, 移动的PCR实验室

易检灵应用场景

- 可用于养殖场异常动物的病原核酸快速检测, 做到随到随检
- 养殖场进出人员、车辆、物资等样本的核酸检测, 操作简便易学, 观看操作视频即可学会使用
- 技术服务老师随车携带, 为客户现场解决养殖难题

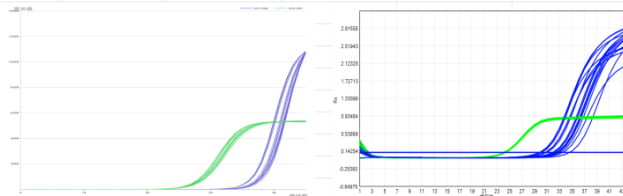
Our vision is to deliver:

- **The Most Convenient** POC (Point-of-Care) Fluorescence Quantitative PCR Kit.
- **The Most Accurate** POC Fluorescence Quantitative PCR Kit.
- **The Most Intelligent** POC Fluorescence Quantitative PCR Kit.

The Pain Points of On-site Testing:

- The cost of building and operating a standard biosafety lab is **prohibitive**.
- Traditional rapid test kits (lateral flow) suffer from **poor precision**.
- Lack of professional technicians vs. high management demand for **real-time results**.

| 血清样本 | | 易检灵 | | GM常规 机提 | |
|------|-----|-----------|----------|-----------|----------|
| | | P72 (FAM) | 内标 (HEX) | P72 (FAM) | 内标 (HEX) |
| A | 梯度1 | 34.48 | 26.55 | 30.1 | 24.26 |
| B | | 34.38 | 26.84 | 29.77 | 24.12 |
| C | | 34.27 | 27.13 | 29.89 | 24.17 |
| D | | 34.66 | 26.68 | 29.92 | 24.2 |
| E | 梯度2 | 36.21 | 27.47 | 30.7 | 24.2 |
| F | | 37.31 | 27.39 | 30.68 | 24.2 |
| G | | 35.79 | 26.69 | 30.96 | 24.26 |
| H | | 34.85 | 26.49 | 31.88 | 24.3 |
| A | 梯度3 | 36.51 | 27.40 | 32.06 | 24.26 |
| B | | 36.93 | 27.17 | 32.05 | 24.22 |
| C | | 36.27 | 27.25 | 32.36 | 24.14 |
| D | | 37.75 | 27.07 | 32.65 | 24.14 |
| E | 梯度4 | 37.48 | 26.68 | 33.46 | 24.18 |
| F | | 36.37 | 26.78 | 32.53 | 24.2 |
| G | | 37.03 | 27.09 | 33.05 | 24.32 |
| H | | Noct | 26.49 | 34.58 | 24.37 |



In EasyTest 1.0, we achieved:

- PCR reagents pre-loaded into 8-tube strips.
- Samples go from "Lysis to Machine" without complex extraction.
- Detection rates for clean samples are comparable to automated machine extraction.

However, there is **still a gap** before these fully solve the pain points of on-site testing!



- ✓ **Extreme Speed:** 3-minute sample processing (down from 10 mins in 1.0); total workflow in <1 hour.
- ✓ **Ultimate Simplicity:** Pipette-free workflow. Drastically lowers the barrier to entry with near-zero contamination risk.
- ✓ **Broad Compatibility:** Beyond clean serum, it is now fully compatible with environmental swabs and fecal samples.
- ✓ **Portable Precision:** Compact and lightweight hardware with performance rivaling high-end central lab equipment.
- ✓ **Full-Process Monitoring:** Exogenous internal controls participate in the pre-treatment phase for maximum result reliability.

Liquid Sample Pre-treatment Choose one of the following:

- ① Let stand at room temperature for 5 minutes. ② Instant centrifugation for 5 seconds.



Mixing with Lysis Buffer

Liquid Samples: Draw 600 μ L of supernatant and add to the ultrasonic tube.

Swab Samples: Place the swab into the processing tube and trim the excess applicator stick.

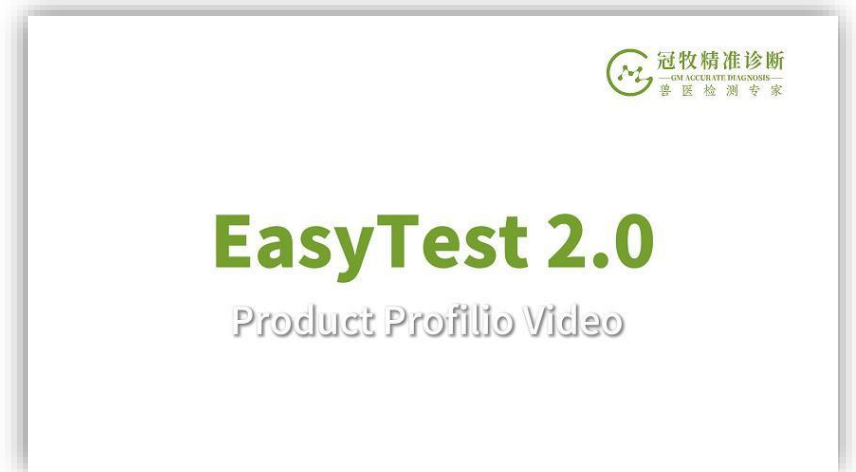
Mixing: Tighten the cap and invert the tube 5 times to ensure full contact and homogenization.

Lysis: Place the tube into the heating block. Start the pre-set lysis program.
(Note: Ensure the cap is sealed to prevent splashing or contamination.)



Loading & Amplification

Open the lysed tube and add 2-3 drops of the sample into the pre-filled 8-tube reagent strip. Invert the strip 3-5 times to mix. Centrifuge briefly. Place into the PCR analyzer to start amplification.



Operation Video



Reducing Contamination, Simplifying Operations

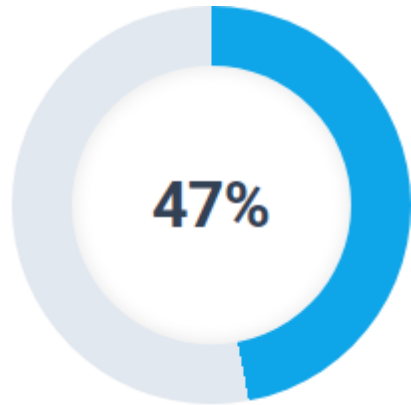
Traditional PCR requires expert pipetting skills, which often leads to aerosol contamination or loading errors.

GM's Proprietary Dropper-Bottle Design makes loading as easy as using eye drops. This eliminates the need for specialized training, making it ideal for farm-level veterinarians and grassroots epidemic prevention staff.



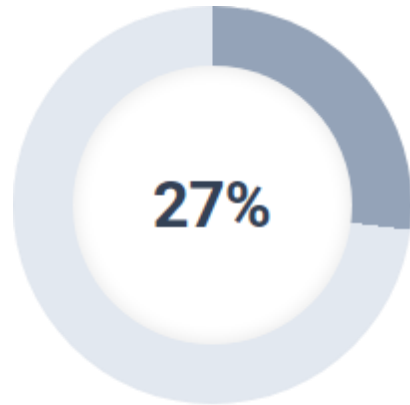
- ✓ **Efficiency Boost:** EasyTest 2.0 saves approximately 30% of time compared to traditional magnetic bead extraction.

In the event of an outbreak, this time difference is critical for rapid decision-making and breaking the chain of transmission.



EasyTest 2.0
Detection Rate

VS

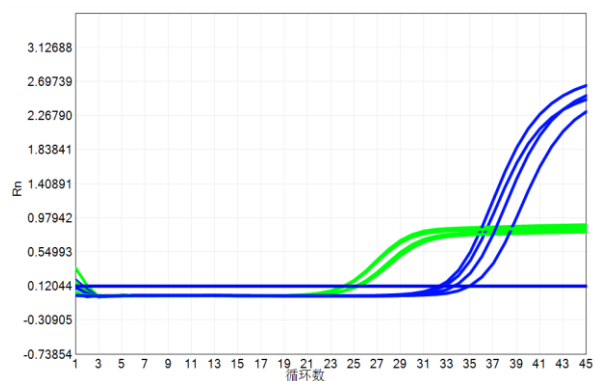


Magnetic Bead Method.
Detection Rate

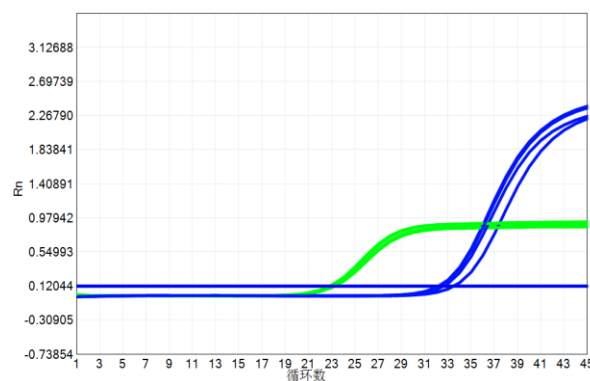
For saliva samples with low viral loads (weak positives), EasyTest 2.0 demonstrates a significantly higher detection rate compared to competitors, effectively addressing the pain point of missed detections during early-stage infection.

| Dilution Factor | Sample(Pig saliva) | |
|-----------------|--------------------|--------------|
| | GM Diagnosis | ████████ |
| Reaction Volume | 50µl | 20+5µl |
| Origin Samples | 38.81 | 32.28 |
| | 37.23 | 31.9 |
| | 39.68 | 32.52 |
| 10 × | 39.73 | Not detected |
| | 40.13 | Not detected |
| | 38.77 | 36.27 |
| 100 × | 40.29 | Not detected |
| | Not detected | Not detected |
| | Not detected | Not detected |
| 1000 × | Not detected | Not detected |
| | Not detected | Not detected |
| | Not detected | Not detected |
| 10000 × | Not detected | Not detected |
| | Not detected | Not detected |
| | Not detected | Not detected |
| Detection Rate | 47% | 27% |

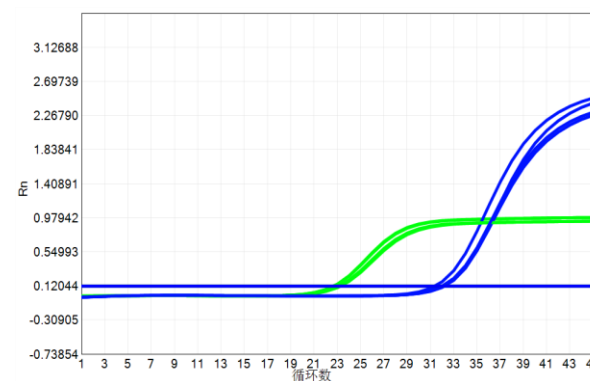
Data proves that whether dealing with serum, saliva, or high-Ct (~31) environmental swabs, the post-processing Ct values remain stable within the 31-33 range, ensuring consistent and reliable results.



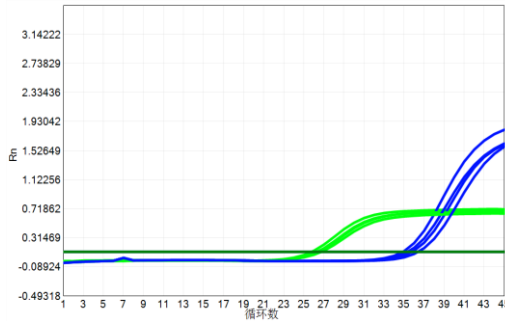
Serum Optimized



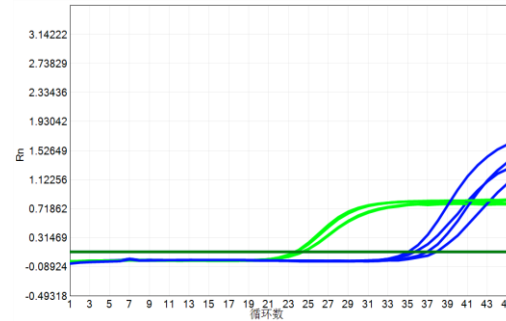
Saliva Optimized



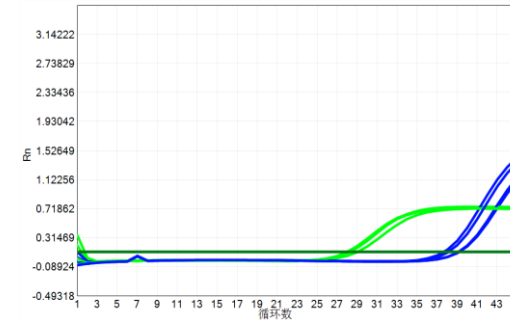
Environmental Swab Optimized



Serum Optimized



Saliva Optimized

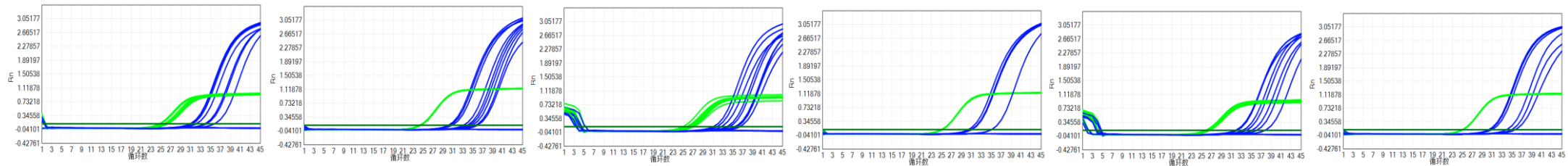


Environmental Swab Optimized

Data indicates that for high Ct-value samples (~35) across serum, saliva, or environmental samples, detection at low concentrations (**Ct 35**) is achievable after processing.

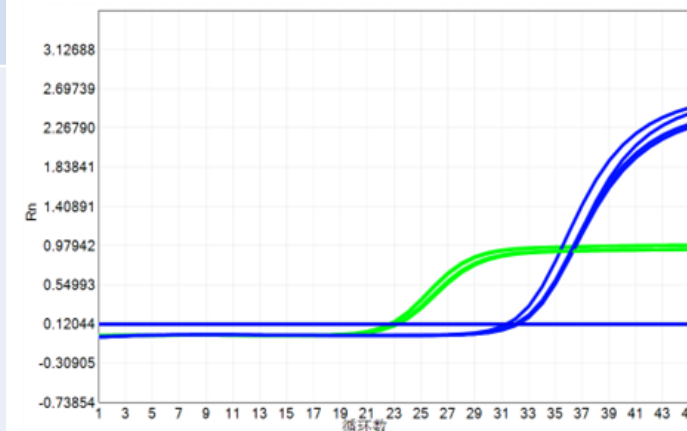
Comparison of hands-free method and magnetic bead method

| Dilution factor | Serum Optimized | | | | Saliva Optimized | | | | Environmental Swab Optimized | | | |
|-----------------|-----------------|----------|----------------------|----------|------------------|----------|----------------------|----------|------------------------------|----------|----------------------|----------|
| | EasyTest 2.0 | | Magnetic bead method | | EasyTest 2.0 | | Magnetic bead method | | EasyTest 2.0 | | Magnetic bead method | |
| | 20μL+20μL | | 20μL+5μL | | 20μL+20μL | | 20μL+5μL | | 20μL+20μL | | 20μL+5μL | |
| Reaction volume | 20μL+20μL | | 20μL+5μL | | 20μL+20μL | | 20μL+5μL | | 20μL+20μL | | 20μL+5μL | |
| Sample NO. | A (FAM) | IC (HEX) | A (FAM) | IC (HEX) | A (FAM) | IC (HEX) | A (FAM) | IC (HEX) | A (FAM) | IC (HEX) | A (FAM) | IC (HEX) |
| Original sample | 31.24 | 24.6 | 30.76 | 24.32 | 31.03 | 24.95 | 31.03 | 25 | 32.07 | 25.86 | 30.85 | 25 |
| Original sample | 30.93 | 24.7 | 30.06 | 24.27 | 32.59 | 27.08 | 30.32 | 25.01 | 31.73 | 25.71 | 30.36 | 25.02 |
| Original sample | 30.82 | 24.82 | 30.3 | 24.36 | 31.72 | 25.67 | 30.9 | 25.02 | 31.84 | 26.5 | 30.21 | 24.99 |
| 10X | 34.07 | 25.9 | 34.26 | 24.34 | 34.24 | 26.24 | Not detected | 25.04 | 33.93 | 26.5 | 33.81 | 25.08 |
| 10X | 32.05 | 25.53 | 33.1 | 24.4 | 35.62 | 26.12 | Not detected | 25.06 | 33.21 | 26.38 | 34.82 | 25.06 |
| 10X | 33.78 | 26.27 | 33.83 | 24.41 | 33.71 | 26.4 | 35.02 | 25.05 | 35.07 | 26.58 | Not detected | 25.06 |
| 100X | Not detected | 26.04 | 35.53 | 24.46 | 35.75 | 26.05 | Not detected | 25.04 | 36.04 | 26.09 | Not detected | 25.06 |
| 100X | 35.71 | 26.05 | 34.85 | 24.38 | 35.32 | 26.21 | Not detected | 25.06 | 37.67 | 26.21 | Not detected | 25.04 |
| 100X | Not detected | 26.09 | 35.9 | 24.35 | Not detected | 25.91 | Not detected | 24.96 | Not detected | 26.02 | Not detected | 25.01 |
| 1000X | Not detected | 26.11 | Not detected | 24.31 | 36.33 | 26.14 | Not detected | 25.02 | Not detected | 25.92 | 35.52 | 24.99 |
| 1000X | Not detected | 26.03 | Not detected | 24.4 | Not detected | 26.53 | Not detected | 25.03 | Not detected | 26.21 | Not detected | 25.03 |
| 1000X | Not detected | 26.23 | Not detected | 24.42 | Not detected | 26.62 | Not detected | 25.01 | Not detected | 26.39 | Not detected | 25.03 |



Data indicates that for complex samples such as environmental and fecal types, the detection rate of EasyTest 2.0 is significantly higher than that of magnetic bead extraction.

| Internal Control | EasyTest2.0-With IC | Without IC |
|------------------|---|---|
| Manifestation | One sample features two amplification curves and two Ct values | Single amplification curve and Ct value |
| Deficiencies | <ul style="list-style-type: none"> - Increases product development difficulty | <ul style="list-style-type: none"> - Unable to monitor abnormalities in individual test samples - Unable to determine if the monitoring result is a true negative - Batch stability and reagent abnormalities of the kit cannot be identified in real-time - Many detection anomalies remain unidentified, leading to misjudgment |
| Advantages | <ul style="list-style-type: none"> - Monitors whether the reaction system is normal, avoiding false negatives - Reduces aerosol contamination risk by using IC monitoring and minimizing positive controls/ | <ul style="list-style-type: none"> - Simplified product development |



- Manufactured in a Veterinary Diagnostic Products GMP workshop
- Approval Number: Veterinary Drug Approval No. 180598956



Not only
faster,

but also
cost-efficient

SAVE 70%

| | Outsourced Third-party Laboratory Testing | EasyTest 2.0 |
|------------------------|---|--|
| Testing Duration | 1-3 Days | < 1 Hrs |
| Ship Cost | 20 RMB per session × 52 sessions per year = 1,040 RMB per year | 0 |
| Diagnosis Cost | 100k RMB/Years | 10K RMB |
| Equipment Depreciation | 0 | ~20K RMB |
| Labor Cost | 0 | 0 |
| Venue requirements | No | No special site requirements, testing can be performed anytime, anywhere |
| Sum | 101 K RMB/Yrs | 30 K RMB/Yrs |



Not only
faster,

but also
cost-efficient

SAVE 56%

| | Centralized Lab | EasyTest 2.0 |
|------------------------|--|---|
| Testing Duration | 0.5-2 Days | < 1 Hrs |
| Ship Cost | Express Shipping: 20RMB/Test×365Days=7300RMB Dedicated Courie: 40RMB×365Days=14K RMB | 0 |
| Diagnosis Cost | 27 K | ~54 K |
| Equipment Depreciation | 30 K | ~20 K |
| Labor Cost | 20 K | No specialized facility required, testing anytime, anywhere |
| Venue requirements | 1万元 | 0 |
| Personnel Cost | 5000元/月×12=6万元 | 0 |
| SUM | ~170 K RMB/Yrs | 74 K RMB/Yrs |

Committed to excellence in animal diagnostics.

THANK YOU!



WeChat Official Account